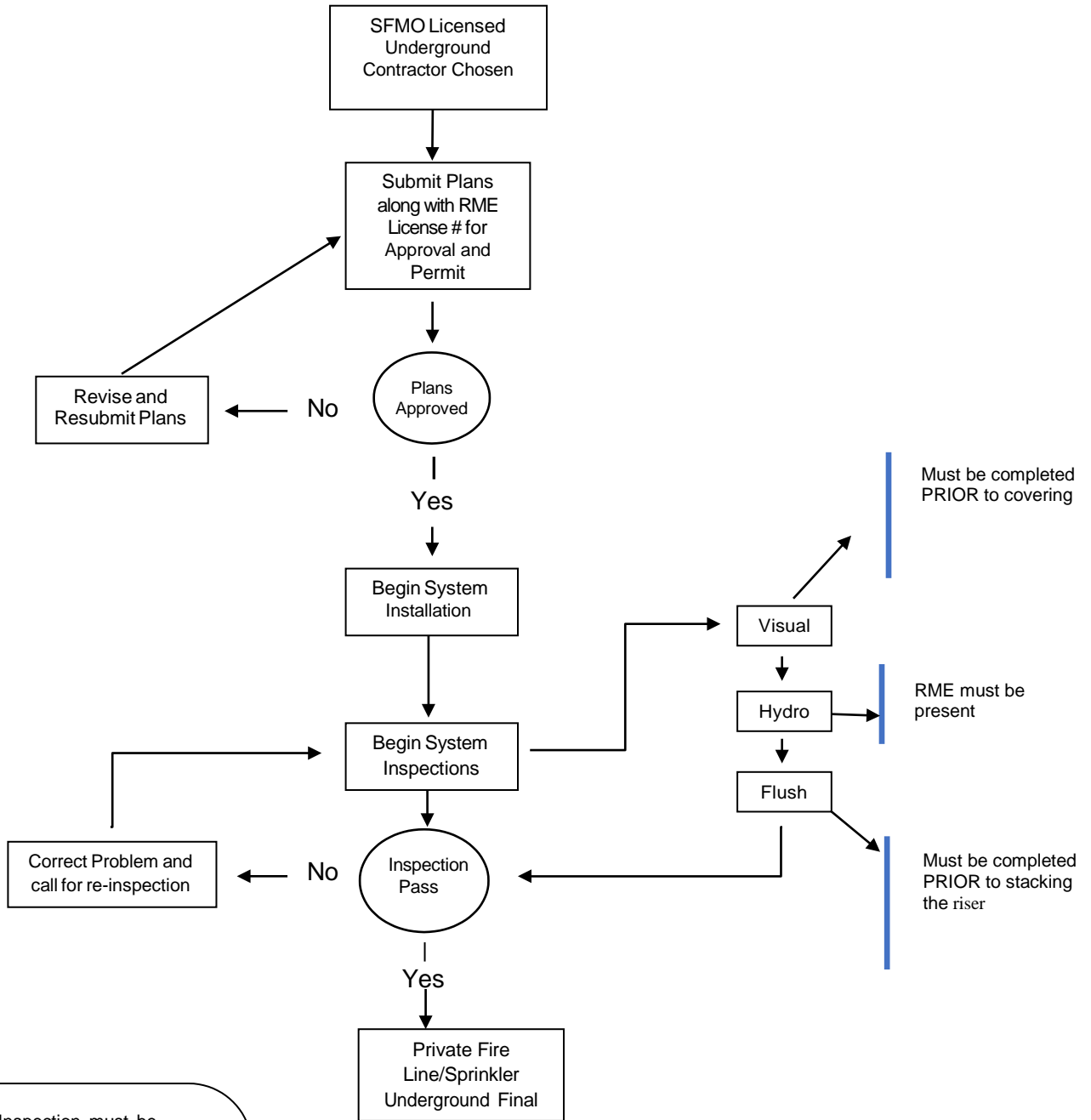


# WCESD#3

## Private Fire Line/Sprinkler Underground Process Flow



1. Visual Inspection must be completed prior to covering the pipe.
2. It is recommended that the hydrostatic test be completed prior to cover. If the test fails areas already covered may be required to be uncovered.
3. Connection of the underground spigot to overhead riser prior to flushing, or "stacking the riser" may result in the overhead pipe being required to be flushed.